

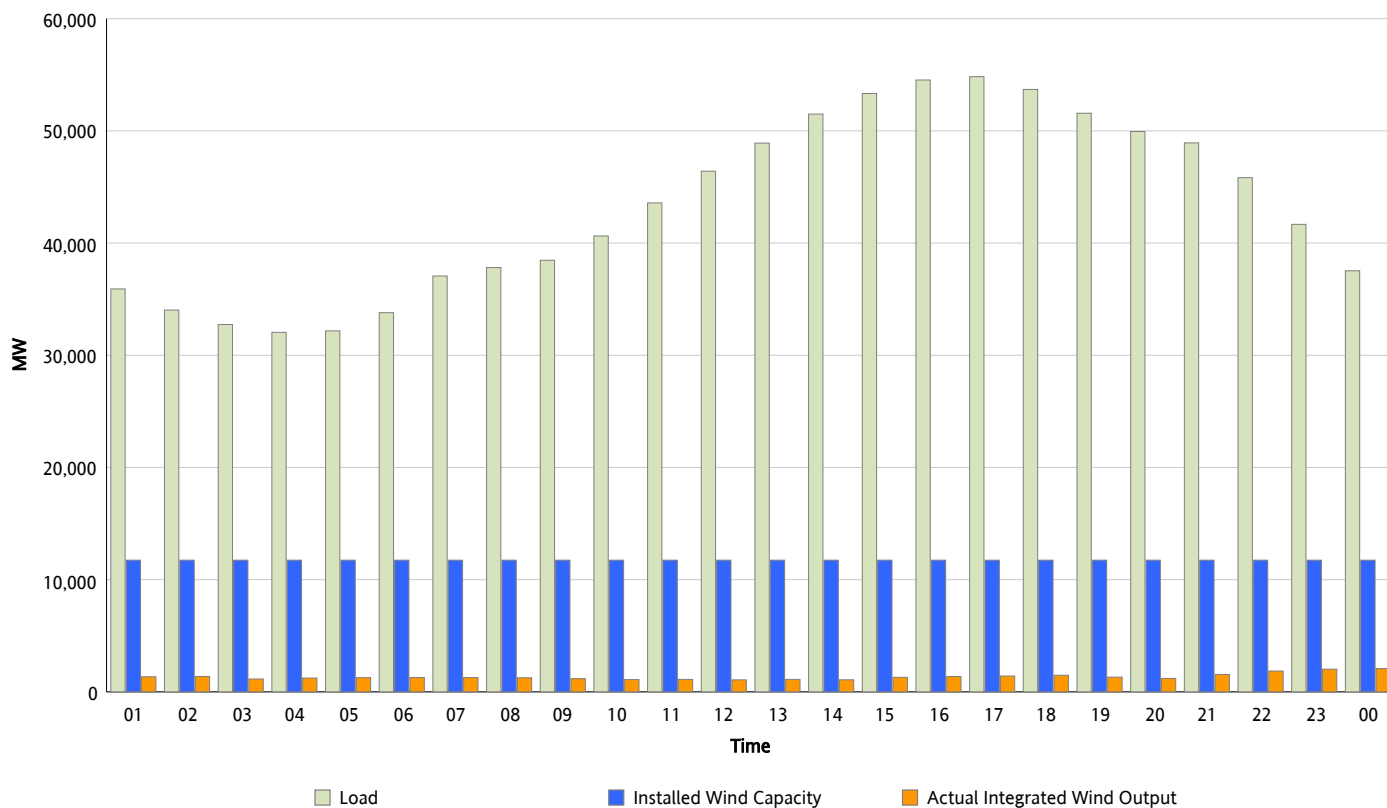


ERCOT Grid Operations

Wind Integration Report : 09/22/2014

Peak Load	54,834 MW
Load Peak Hour (HE)	17
Wind Over Peak	1,410 MW
Wind Record 03/26/14	10,296 MW
Max Wind Value*	2,112 MW
Wind Peak Time	23:34
Wind Integration %	5.66 %

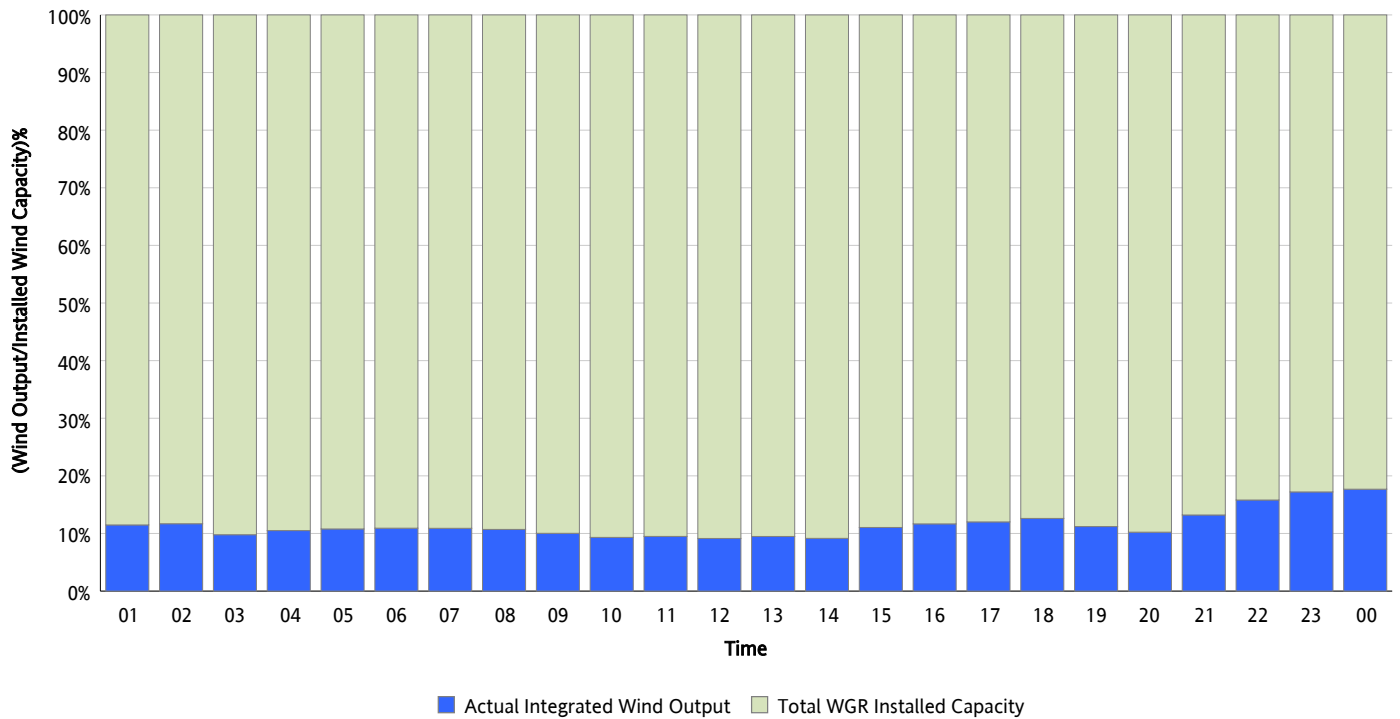
Hourly Average Actual Load vs. Actual Wind Output
09/22/2014



** Wind Record and Wind Max represent instantaneous values and the rest of the values are integrated over the hour.
Capacity numbers used in the graphs are based on the expected commercial operation date of each Wind Generation Resource.*

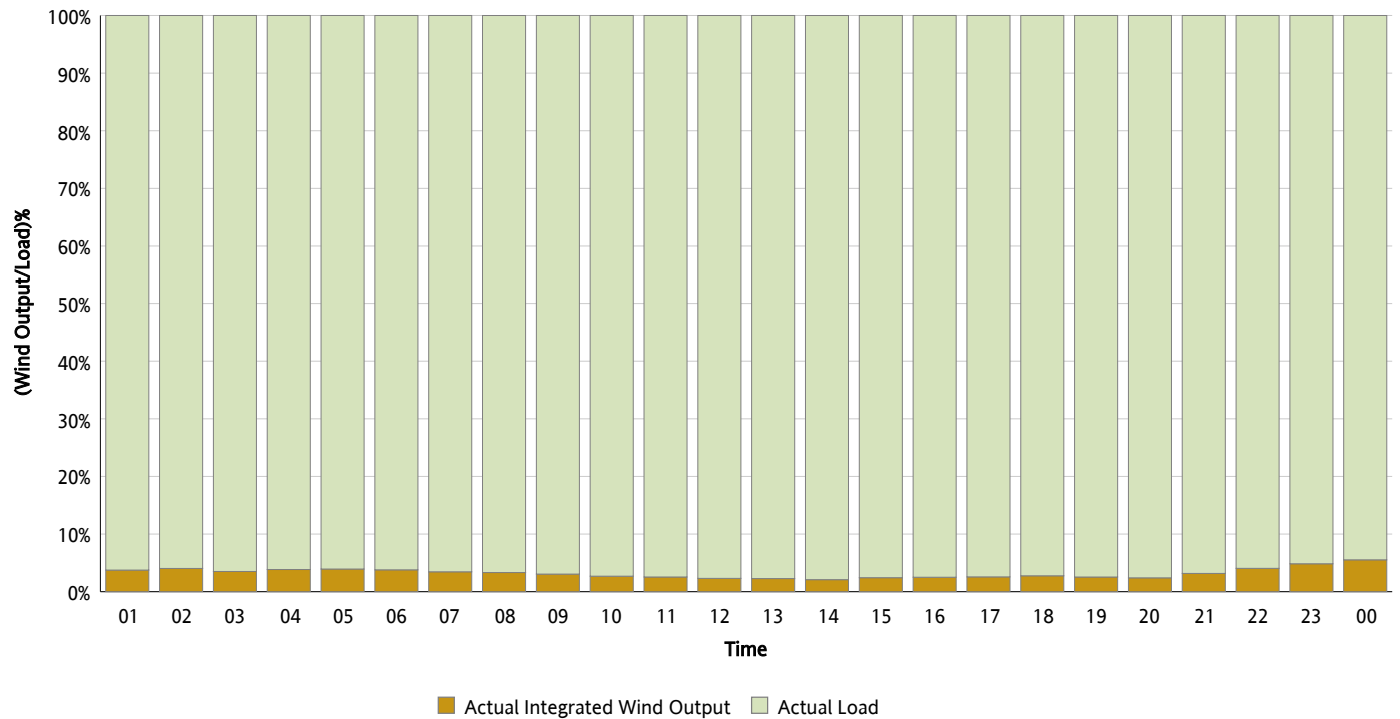
Actual Wind Output as a Percentage of the Total Installed Wind Capacity

09/22/2014



Actual Wind Output as a Percentage of the ERCOT Load

09/22/2014



ERCOT Load vs. Actual Wind Output

09/15/2014 - 09/22/2014

